


RECOMMENDATIONS

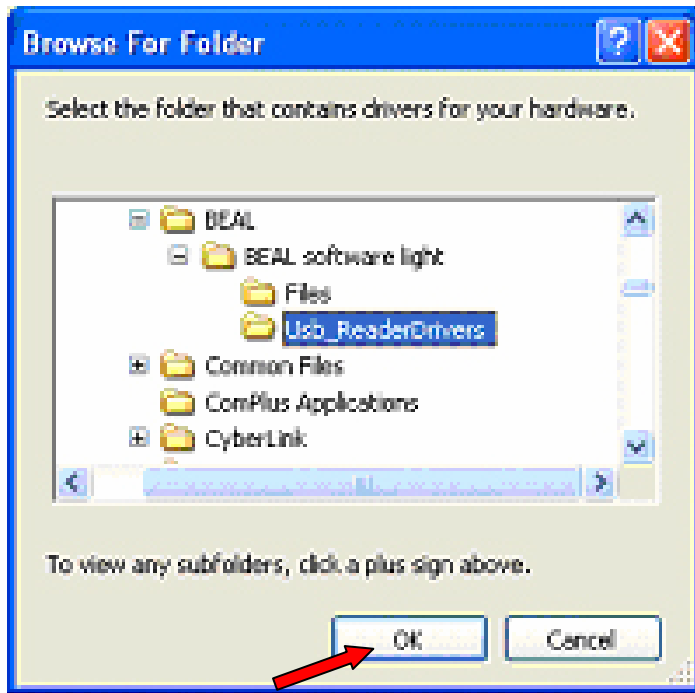
Chip reader installation on a USB port:


 The first time you plug the chip reader into a USB port of your computer, a "RFID device 125KHz" is detected.



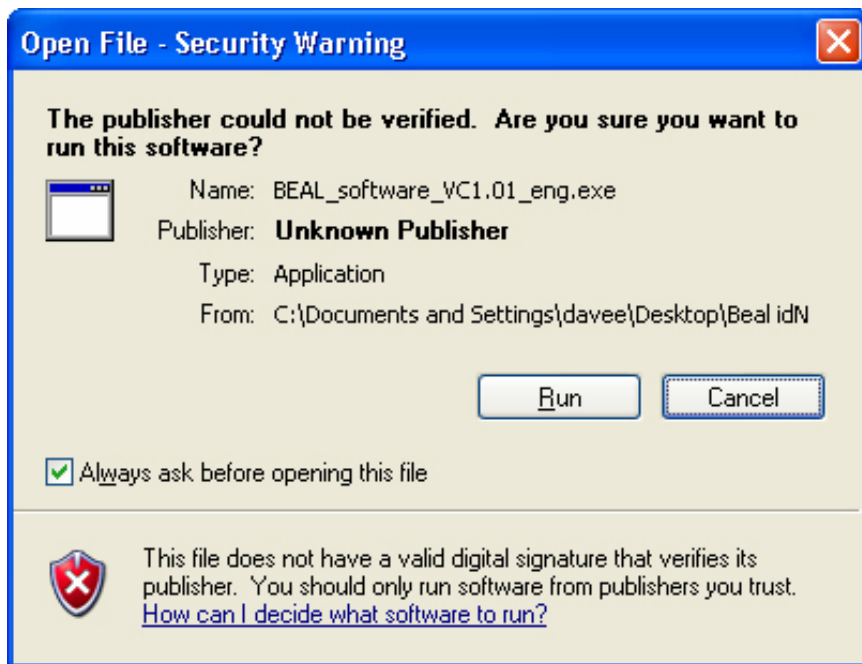
 Windows will ask to search for the drivers. Click 'No, not this time'. Then you have to locate the specific drivers.




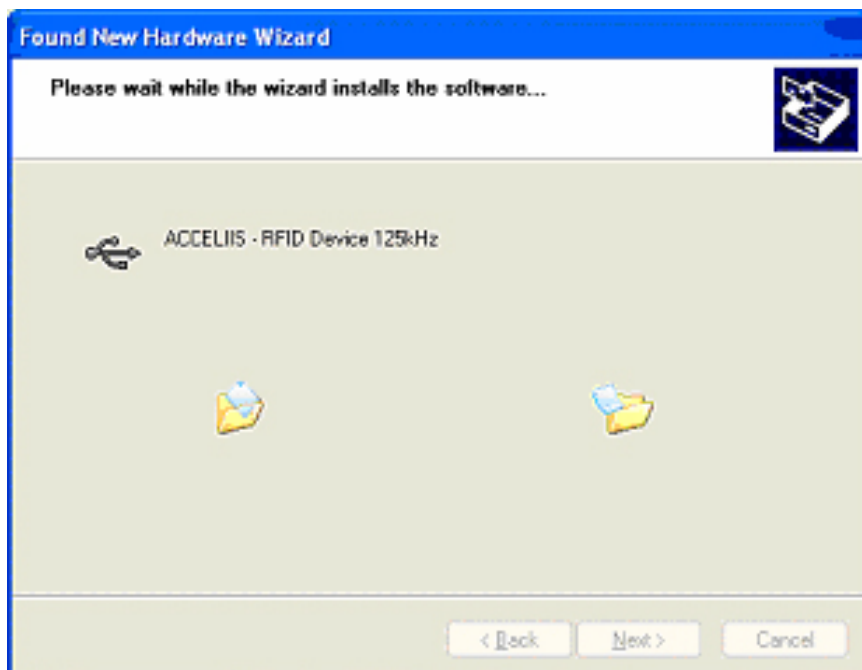


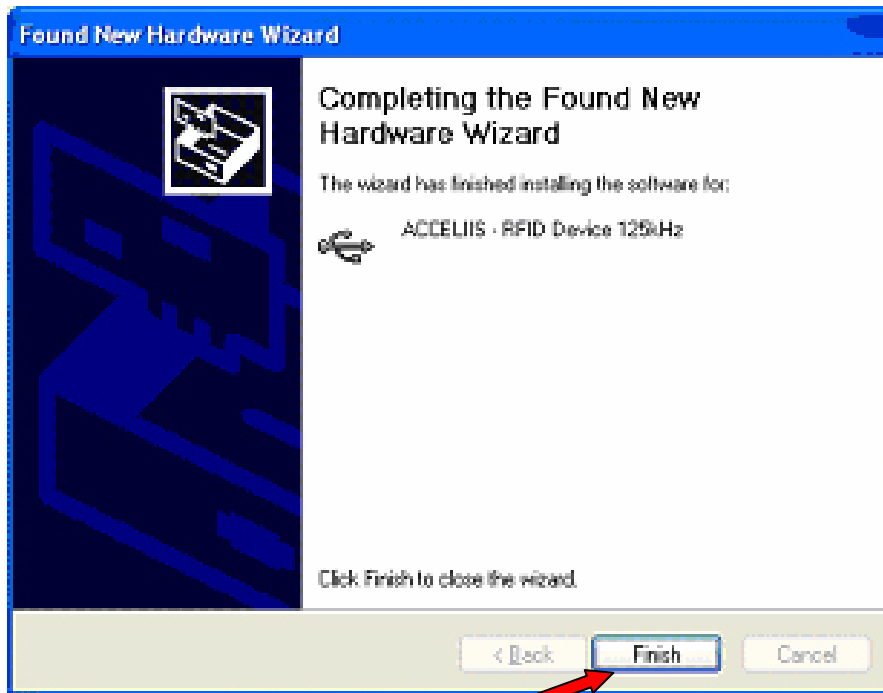
 Select the location of the folder "ReaderDrivers" in your software installation folder (by default C:\Program Files\BEAL\BEAL software light\Usb_ReaderDrivers or C:\Program Files\BEAL\BEAL software complete\Usb_ReaderDrivers)




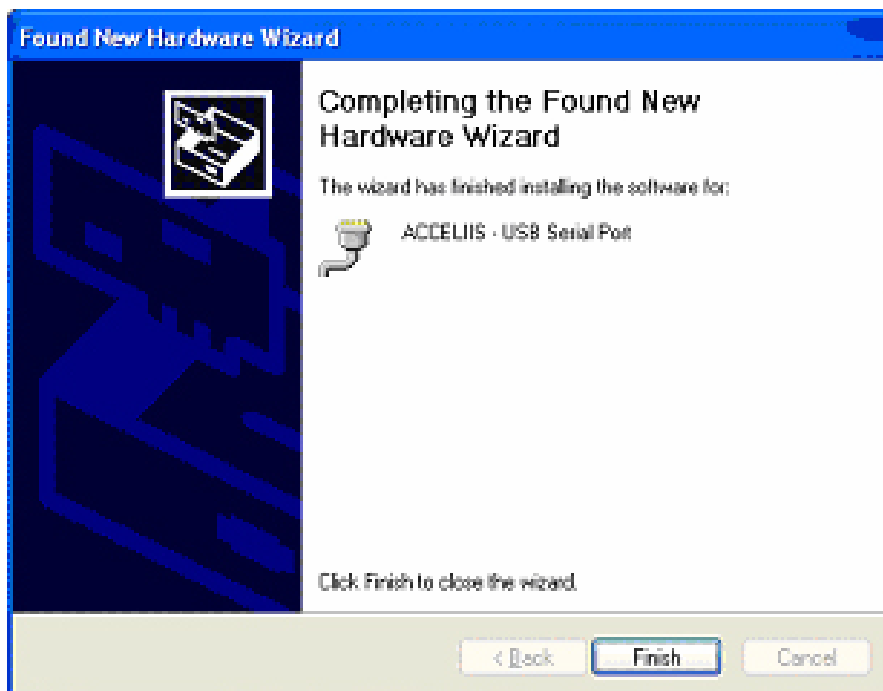



 The device is then installed as "ACCELIIS - Soap Box Reader - RFID 125 KHz". Windows will ask you if you wish to continue with the installation as it has not been validated by Microsoft. Click 'run'.

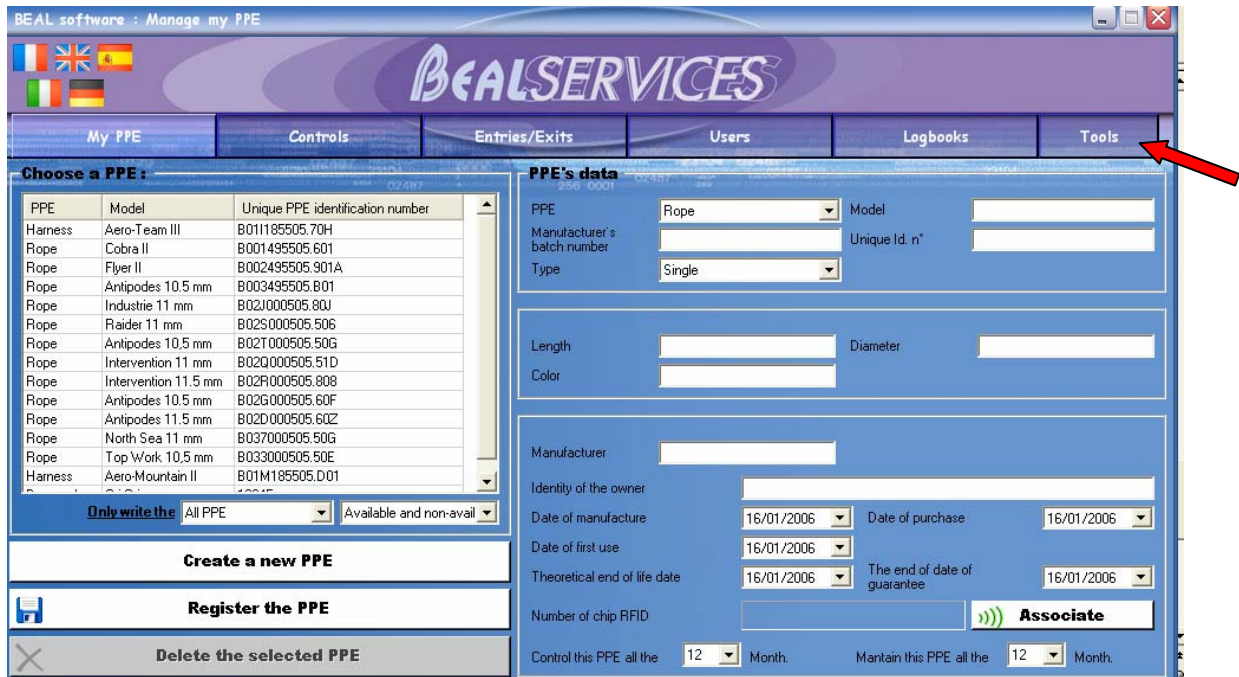





 After the installation of the first driver, the second 'Add New Hardware Wizard' will be displayed. Repeat the installation process until obtain:





 The BEAL PPE software will work without reporting an error.




 To configure the use of the chip reader on your BEAL Software, click on the icon "tools" of the menu.

 **NB:** With several USB ports, it is possible that your computer requires the same RFID reader installation for all the USB ports. To avoid this, it is recommended that the RFID reader is always used on the same USB port.

 **NB:** After starting your PC, if your RFID reader is not detected, you have to disconnect and reconnect it. To avoid this problem, it is recommended that the RFID reader is connected after Windows has started.

 **NB:** If your USB port chip reader is correctly installed and there are detection problems, turn the RFID chip reader over (IdN side hidden) and try again.

 **NB:** If you use a laptop, it is strongly recommended to connect your computer to the mains supply.

 **NB:** If, your USB port chip reader doesn't work in spite of all these previous attempts, it is possible that your PC doesn't supply power to the USB port. You will have to use a powered USB hub.