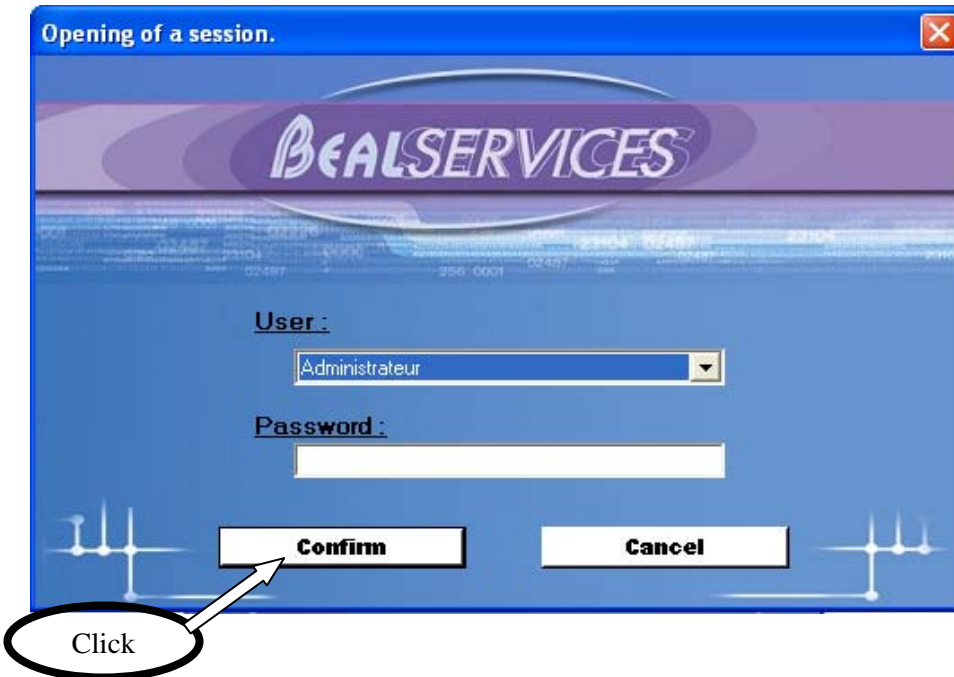
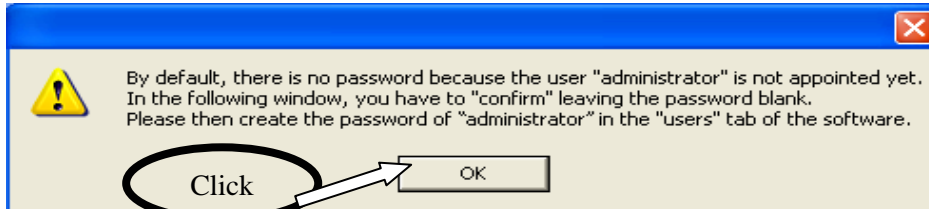
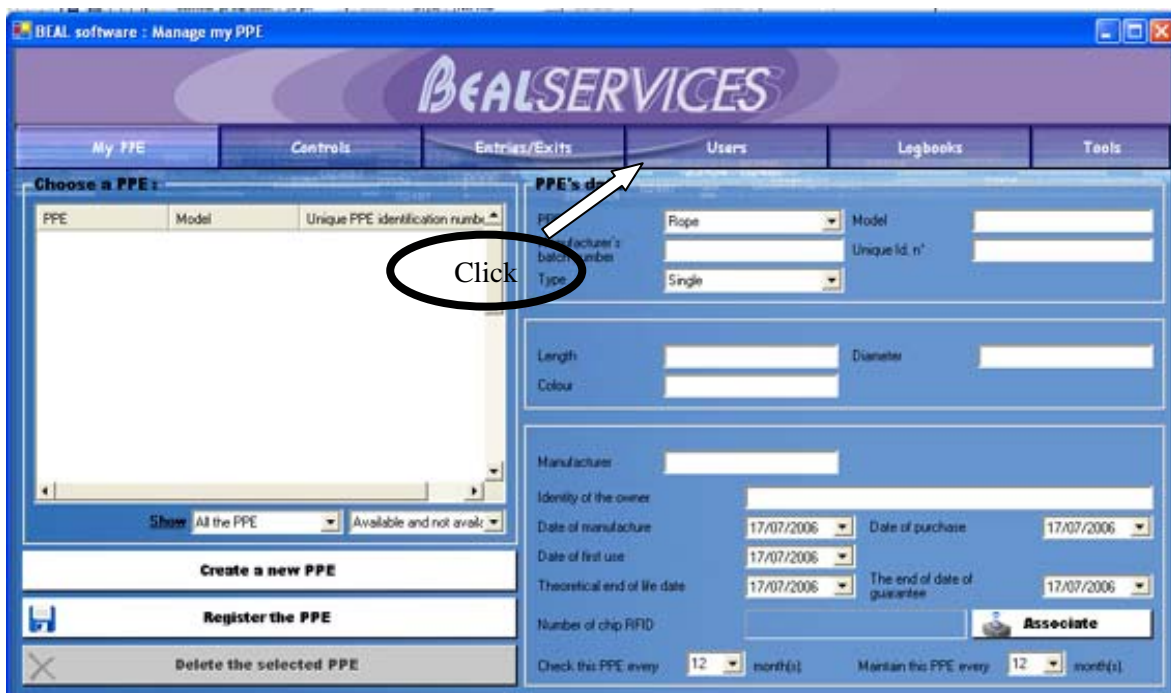


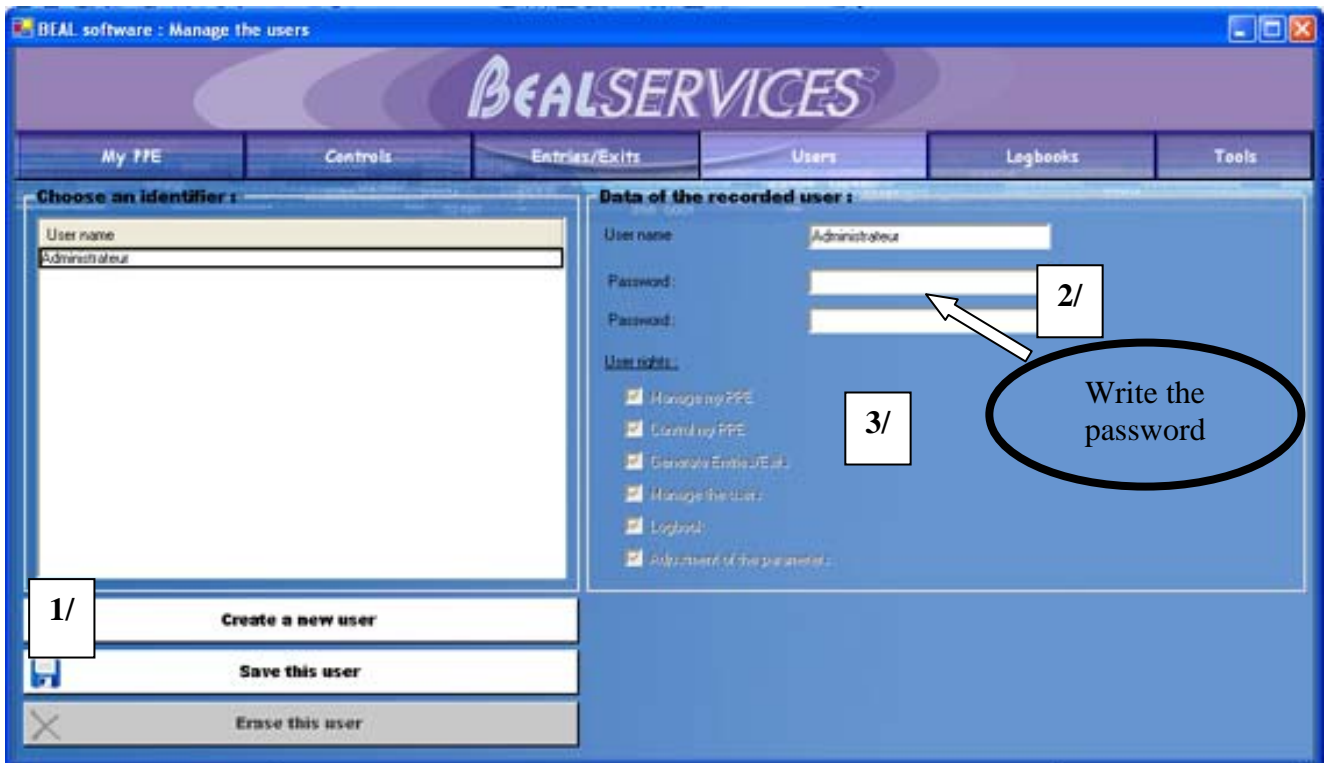
NOTICE OF USE - BEAL SOFTWARE

✓ 1st use of BEAL SOFTWARE



Configure the users





Configure the users, it means that you have to :

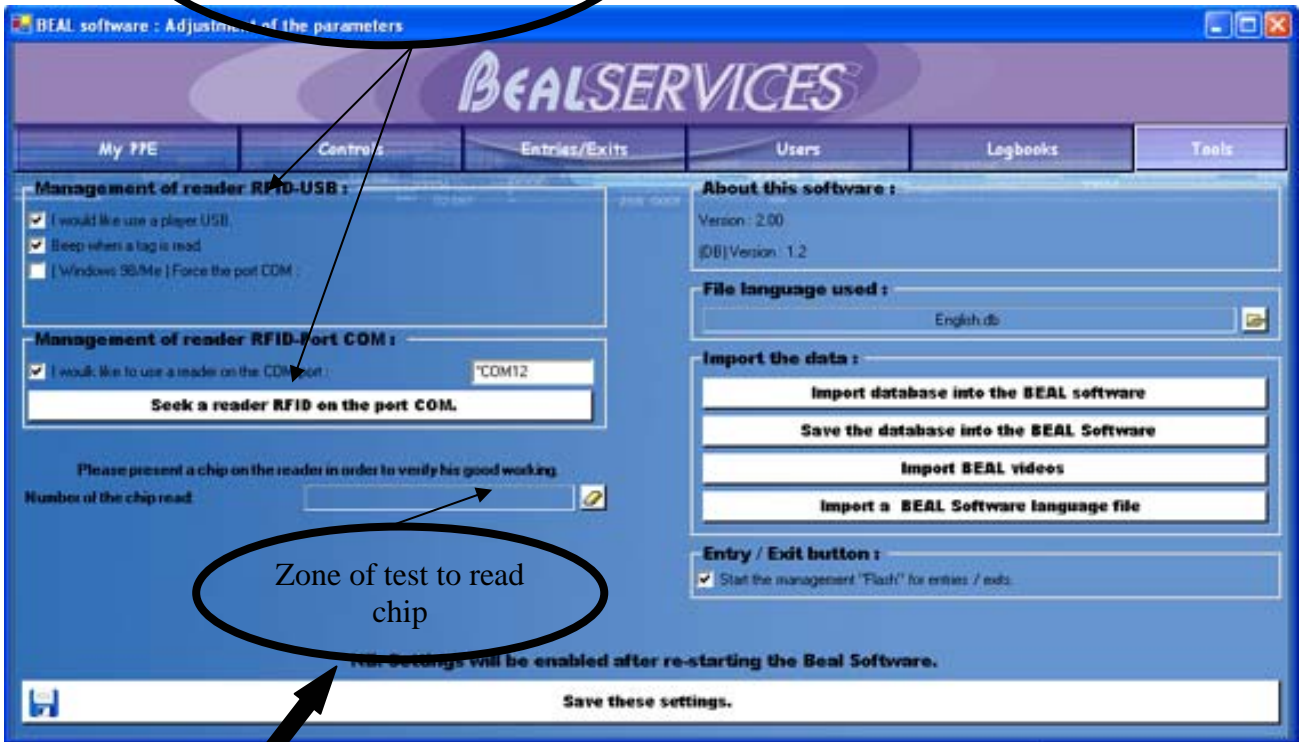
- 1/ Press the button « **Create a new user** »,
- 2/ Write the **name** and the **password** of the user
- 3/ Select his **rights**.

NB : The configuration of the user "administrator" is made 1st, you have only to inform the password.

✓ Use a chip reader with BEAL SOFTWARE

- 2 choices of reader : - The RFID reader on USB
- The RFID reader on port COM

According to the reader that you possess, mark compartments concerning you.

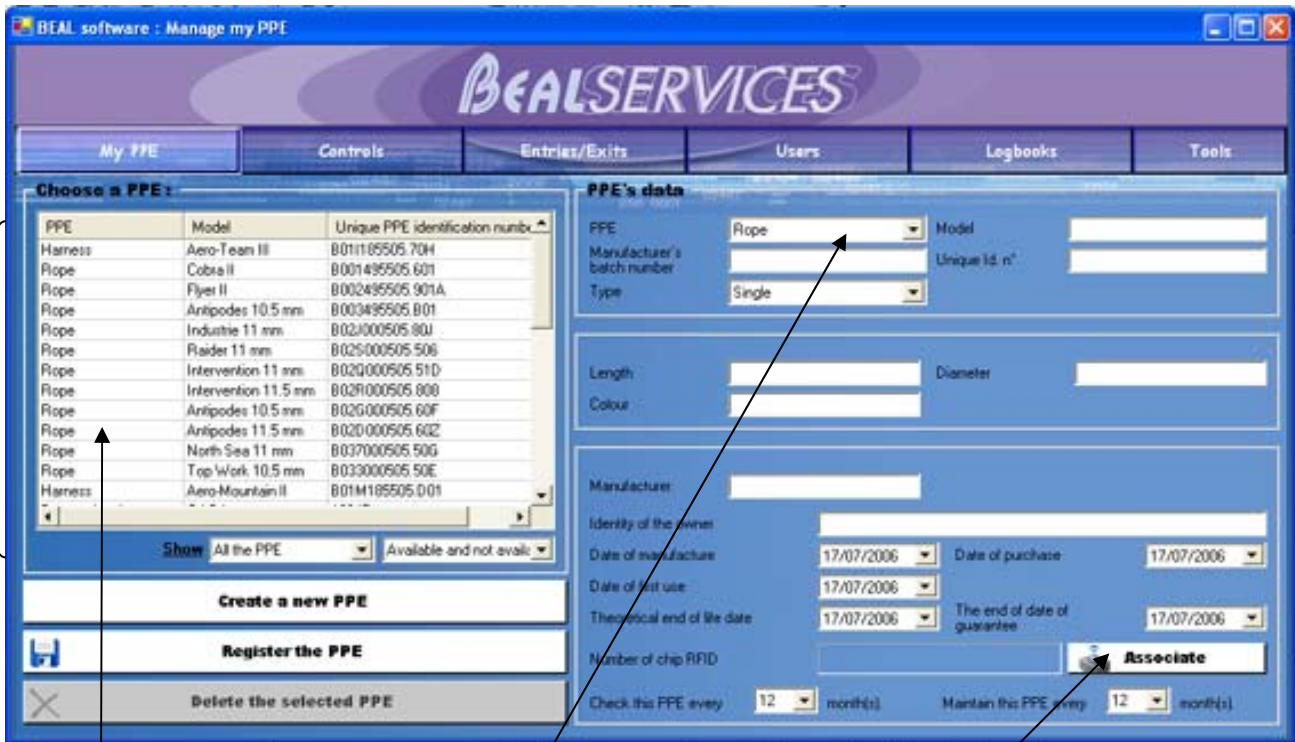


Zone of test to read chip



You have to register then close the application so that the recording of the parameters are actual.

✓ Register the PPE



List of my registered PPE in the BEAL SOFTWARE data base.

Choice of the PPE : rope, harness...

Inform the data to register a new PPE.

To associate a RFID chip to your PPE, click on the button "Associate", then put the chip on the reader until it is read.

Register a rope

Choose a PPE:

PPE	Model	Unique PPE identification number
Harness	Aero-Team II	B011185505 70H
Rope	Cobra II	B001495505 60I
Rope	Flyer II	B002495505 901A
Rope	Antipodes 10.5 mm	B003495505 80I
Rope	Industrie 11 mm	B023000505 60J
Rope	Rader 11 mm	B025000505 50K
Rope	Intervention 11 mm	B029000505 51D
Rope	Intervention 11.5 mm	B02R000505 808
Rope	Antipodes 10.5 mm	B02G000505 60F
Rope	Antipodes 11.5 mm	B02D000505 60Z
Rope	North Sea 11 mm	B037000505 50G
Rope	Top Work 10.5 mm	B033000505 50E
Harness	Aero-Mountain II	B01M185505 D0I

PPE's data

PPE: Rope | Model: Flyer II
 Manufacturer's batch number: B002495505 901A | Unique Id. n°: B002495505 901A
 Type: Single

Length: 40m | Diameter: 10.5 mm
 Colour: Saumon

Manufacturer: BEAL
 Identity of the owner: Emly
 Date of manufacture: 06/01/2004 | Date of purchase: 06/02/2004
 Date of first use: 07/02/2004
 Theoretical end of life date: 06/01/2013 | The end of date of guarantee: 06/02/2007
 Number of clip RFID: 041484937000000
 Check this PPE every: 12 month(s) | Maintain this PPE every: 12 month(s)

Buttons: Create a new PPE, Register the PPE, Delete the selected PPE

You have to configure the **key dates of your rope** according to the information announced by the manufacturer on the instructions.

You have to configure the frequencies of **control and maintenance** of your PPE according to your use.

Automatic duplication of the manufacturer's batch number on the Unique Id. Number.

Register a generic

You can create various categories of PPE. If the category of PPE which you wish to register does not exist, create a "generic" PPE.

The screenshot shows the 'BEAL SERVICES' software interface for managing PPE. The window title is 'BEAL software : Manage my PPE'. The main header is 'BEAL SERVICES'. The interface is divided into several sections: 'Choose a PPE' (a table with columns 'PPE', 'Model', and 'Unique PPE identification number'), 'PPE's data' (a form with fields for 'PPE', 'Manufacturer's batch number', 'Generic name', 'Manufacture', 'Identity of the owner', 'Date of manufacture', 'Date of first use', 'Theoretical end of life date', 'Number of chip RFID', 'Check this PPE every', and 'Maintain this PPE every'), and 'Logbooks' and 'Tools' tabs. The 'PPE's data' section is annotated with three numbered boxes: '1/' points to the 'Generic' dropdown menu, '2/' points to the 'Date of purchase' field, and '3/' points to the 'Generic name' field. The 'Date of purchase' field is also annotated with a '2/' box. The 'Associate' button is visible at the bottom right of the 'PPE's data' section.

Create a « generic » PPE, it means that you have to:

1/ Choose in the list, the category of your PPE, here "generic".

2/ Inform the **general data** of the PPE.

3/ Attribute a **name** to the "generic" category (ex : Ice tool, shoe...)

NB : By reappointing your "generic" PPE, you create a new category of PPE totally independent.

Associate a RFID chip to a PPE

Choose a PPE:

PPE	Model	Unique PPE identification number
Harness	Aero-Team II	B01189505.70H
Rope	Cobra II	B001495505.60I
Rope	Flyer II	B002495505.901A
Rope	Antipodes 10.5 mm	B003495505.80I
Rope	Indulite 11 mm	B02400505.60J
Rope	Rader 11 mm	B02500505.50K
Rope	Intervention 11 mm	B02600505.51D
Rope	Intervention 11.5 mm	B02800505.80B
Rope	Antipodes 10.5 mm	B02900505.60F
Rope	Antipodes 11.5 mm	B02000505.60C
Rope	North Sea 11 mm	B03700505.50G
Rope	Top'Work 10.5 mm	B03300505.50E
Harness	Aero-Mountain II	B01M189505.D0I

PPE's data

PPE: Rope Model: Flyer II
 Manufacturer's batch number: B002495505.901A Unique Id. n°: B002495505.901A
 Type: Single

Length: 40m Diameter: 10.2 mm
 Colour: Saumon

Manufacturer: BEAL
 Identity of the owner: Enly
 Date of manufacture: 06/01/2004 Date of purchase: 06/02/2004
 Date of first use: 07/02/2004
 Theoretical end of life date: 06/01/2013 The end of date of guarantee: 06/02/2007
 Number of chip RFID: 041484932F000000 Associate
 Check this PPE every: 12 month(s) Maintain this PPE every: 12 month(s)

6/ Register the PPE

3/

4/

To associate a RFID chip to a PPE, you have to :

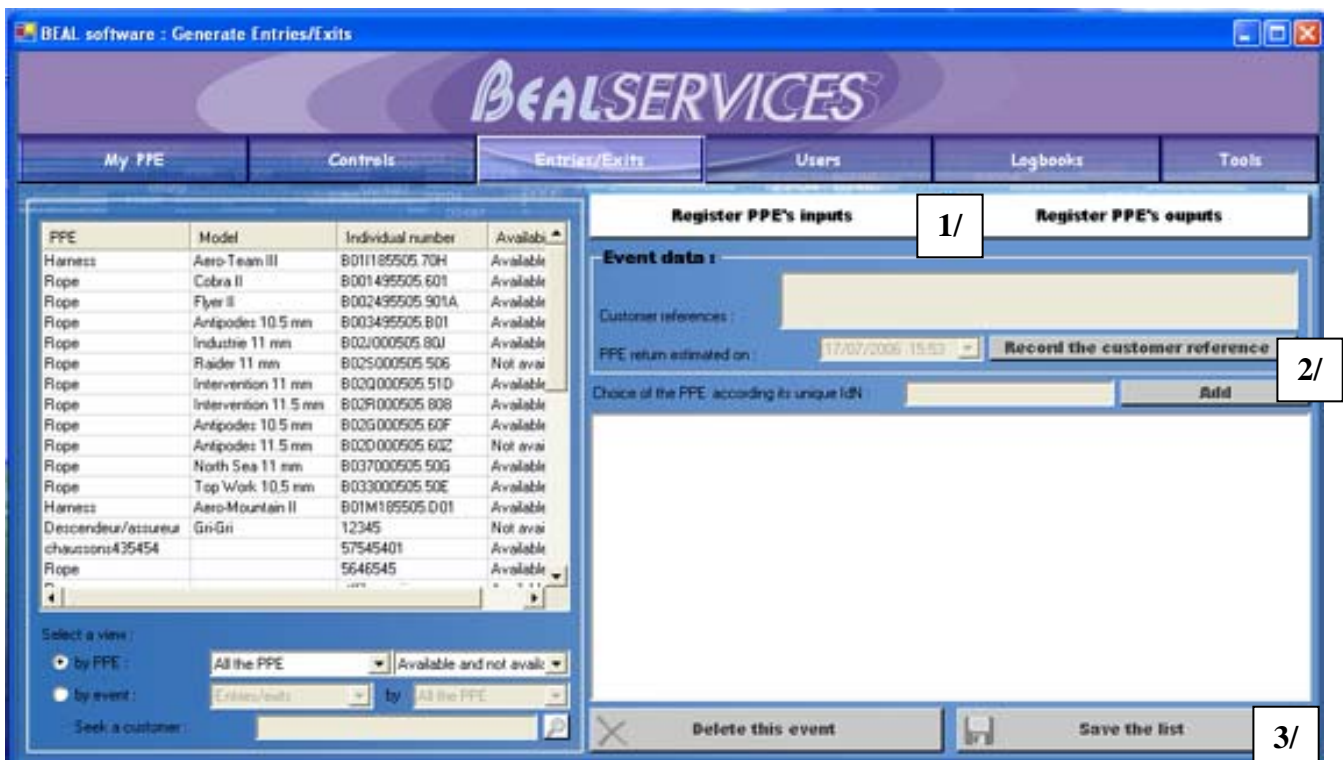
- 1/ Have **inserted**, beforehand, a RFID chip into your PPE.
- 2/ **Install and configure** your reader of RFID chip.
- 3/ Inform the **data of the PPE** (Manufacturer's batchnumber, Unique Id n°).
- 4/ Press on the button "**Associate**". A discount of 10 seconds begins.
- 5/ Put, during the 10 seconds, the PPE on the reader until the n° of the chip appears (The distance of reading does not exceed 10 cms maximum).
- 6/ Press on the button "**Register the PPE**".

✓ Register PPE's inputs and outputs

Thanks to the BEAL software, you can register all the movements of your PPE. When you use them, you have just to register an output and, conversely, when you stopped using the PPE in question, you register an output. You thus have access in a single click to the state of your stock.

In the case of a loan of equipment, you can specify the name of the customer as well as the scheduled date for the return of PPE.

A research of your PPE by customer is also possible.



Register PPE's outputs, it means that you have to:

1/ Click the button « **Register PPE's outputs** ».

2/ Click in the list to the left of your screen, on the PPE to be taken out. Then press on the button "Add". Your list is created. Renew the operation as often as you wish to go out PPE. If you possess a reader of RFID chip, you have only to PPE on reader; they will be added automatically to the list of the PPE to be taken out.

3/ Press on the button « **Save the list** ».

NB: During the constitution of your list, if you add a PPE by mistake, you can get rid of it without erasing your whole list. Select the PPE to be got rid of in your list and click "**Delete this event**".

Register PPE's inputs, it means that you have to:

1/ Click the button « **Register PPE's Inputs** ».

2/ Click in the list to the left of your screen, on the PPE to be entered. Then press on the button "**Add**". Your list is created. Renew the operation as often as you wish to enter PPE. If you possess a reader of RFID chip, you have only to PPE on reader; they will be added automatically to the list of the PPE to be entered.

3/ Press on the button « **Save the list** ».

NB: During the constitution of your list, if you add a PPE by mistake, you can get rid of it without erasing your whole list. Select the PPE to be got rid of in your list and click "**Delete this event**".

Data of the event

At every output of a PPE, you can choose to associate it additional information, as the customer reference and the scheduled date of return.

The "**customer reference**" allows you to register the references of the person who is going to use the PPE which you are taking out.

"**PPE return estimated on**" allows you to associate a date of input of your PPE.

✓ **Realize the control of a PPE**

To control a PPE, you have to select the PPE of your choice in the list controls on the PPE or put the PPE on the reader, if it possesses a chip and press on the button « **Control my PPE** ».

The screenshot shows the 'BEAL software : Control my PPE' window. At the top, there is a navigation bar with tabs: 'My PPE', 'Controls', 'Entries/Exits', 'Users', 'Logbooks', and 'Tools'. Below this is a table titled 'The list controls on the PPE:'.

Next control	PPE	Model	Individual number	Availability	Last control	Result of the last control	Person in charge of the last control
30/06/2007	Skirt	aventura	55ab002062606	Available	30/06/2006	Minor	Administrateur
30/03/2007	Harness	aeropark	602b01q194505	Not available	30/03/2006	Major	Administrateur
13/01/2007	Rope	Antipodes 10.5 mm	B003495505 B01	Available	13/01/2006	NTR	Administrateur
04/07/2007	Rope	Industrie 11 mm	B02j000505 80J	Available	04/07/2006	Terminal	Administrateur
12/04/2007	Rope	flyer	01	Available			
13/04/2007	Rope	baobab	11db02e000505	Not available			
04/04/2007	Rope	premium	802b00b039606	Available			
13/04/2007	Rope	Bonzai	71bb02j000505	Not available			
05/04/2007	Rope	cobra	601b001495505	Available			
11/04/2007	Rope	flyer	a	Available			
13/04/2007	Rope	ginkgo	b02000505	Not available			
05/04/2007	Rope	antipode	b01b003495505a	Available			
04/04/2007	Rope	antipodes	b01b003495505	Available			
30/03/2007	Harness	aeropark	106b01q194505	Not available			
30/03/2007	Harness	aeropark	p71b01q194505	Not available			
30/03/2007	Harness	aeroclassic	qvb01b327505	Available			
30/03/2007	Skirt	aventura	scfb002062606	Available			
30/03/2007	Skirt	aventura	61ab002062606	Available			
30/03/2007	Skirt	aventura	51ab002062606	Available			
30/03/2007	Skirt	aventura	51ub002062606	Available			
04/04/2007	Rope	cobra	cm1ub01495505	Available			

At the bottom of the window, there is a search bar with 'Single identifier' set to '601b001495505' and 'Model' set to 'cobra'. To the right of the search bar are two buttons: 'View the PPE records' (with a magnifying glass icon) and 'Control my PPE' (with a document icon). Arrows from the text box above point to the 'Control my PPE' button and the row for the selected PPE.

If you only wish to view the life sheet of a PPE controlled previously, click on the button "**View the PPE records**".

Each PPE possesses a life sheet which will have to follow it throughout its life.

To fill this sheet, click on the various choices corresponding to the state of your rope. For your help to choose, various scenarios, illustrated by photos, are proposed to you. By clicking on the various photos, you validate the state of the rope.

Life sheet

Model	cobra	Length	50	Date of purchase	05/04/2006
Manufacturer's batch	601b001495505	Diameter	8,6	Identity of the owner	mr durant 12 rue destain
Unique Id. n°	601b001495505	Date of manufacture	05/04/2005	Date of first use	05/04/2006
Type	Single	Colour	vert	Theoretical end of life date	05/04/2008

HISTORICAL CHECKING
Before considering putting a rope back into use, it should be scratched and binned if

- The rope is a semi-static type and has sustained a fall greater than factor 0,3
- The rope is a dynamic type and has sustained a fall greater than factor 1,8
- The rope has been exposed to extreme temperatures (<-20°C or >+80°C)
- The rope has been in contact with chemical agents (acids, oils, petrol...)
- The theoretical end-of-life date has not been reached or has passed

GENERAL CHECKING

- Check the length of the rope
- Check the rope marking
- Check if there is sheath slippage
- Check the rope is not dirty

Illustrations by videos

Signs of wear	Burns			Cuts			Soft zones			Part of the core is visible	Possible areas of internal rupture	Hairs present												
	Minor	Major	Terminal	Minor	Major	Terminal	Minor	Major	Terminal				Minor	Major	Terminal									
NTR																								

Name of inspector: Administrateur Date of inspection: 17/07/2006

Inspector's remarks:

Examples of photos :



✓ **Consult the logbooks**

By clicking on the various buttons below, you have access to several summaries of information:



- Users list: Who are the persons who use my software and what rights have they?
- PPE's list: What are PPE which I possess and which are their characteristics?
- Input and output list/person: What are the various equipments which were taken out / entered by this person, over a defined period?
- List of loans/person: Who gave right to this customer to use my PPE? Who is the person in charge?
- List date/PPE: Over a period defined (the month for example), what equipments went out or entered?
- Periods of use/PPE: What was the intensity of use of my PPE?
- Input, output list and PPE: How many times did this equipment go out? What does it remain in my stock?
- Completed controls and maintenance: When did I control and did maintain my PPE?
- Forthcoming controls and maintenance: When am I going to have to control and maintain my PPE?
- PPE Alert: Today, I have to control or maintain PPE following ones: ...

NB : You can export the whole of the data of your newspapers in Excel.

Examples of logbooks :

PPE's list

PPE	Model	id. manufacturer	identification	Type	Size	Chest size	Thigh size	Manufacturer	Date of manufacture	Date of purchase	Owner	Date of first use	Theoretical end of life date	The date of ending guarantee
Rope	Cobra II	B001495505.001	B001495505.001	Half	200 m	8,6 mm		BEAL	06/01/2006	06/01/2006		06/01/2006	06/01/2006	06/01/2006
Rope	Flyer II	B002495505.901A	B002495505.901A	Single	40m	10,2 mm		BEAL	06/01/2004	06/02/2004	Elmyr	07/02/2004	06/01/2019	06/02/2007
Rope	Antipodes 10,5 mm	B003495505.01	B003495505.01	Single	20 m	10,5 mm		BEAL	06/01/2006	06/01/2006		06/01/2006	06/01/2006	06/01/2006
Rope	IndusLife 11 mm	B02J000505.80J	B02J000505.80J	Semi-static type A				BEAL	06/01/2006	06/01/2006		06/01/2006	06/01/2006	06/01/2006
Rope	Harder 11 mm	B02S000505.506	B02S000505.506	Semi-static type B		11 mm		BEAL	06/01/2006	06/01/2006		06/01/2006	06/01/2006	06/01/2006
Rope	Intervention 11 mm	B02Q000505.510	B02Q000505.510	Semi-static type A		11 mm	Noir	BEAL	06/01/2006	06/01/2006		06/01/2006	06/01/2006	06/01/2006
Rope	Intervention 11,5 mm	B02R000505.808	B02R000505.808	Single	100 m	11,5 mm		BEAL	06/01/2006	06/01/2006		06/01/2006	06/01/2006	06/01/2006
Rope	Antipodes 10,5 mm	B02Q000505.60F	B02Q000505.60F	Semi-static type A		10,5 mm	Blanc	BEAL	06/01/2006	06/01/2006		06/01/2006	06/01/2006	06/01/2006
Rope	Antipodes 11,5 mm	B02D000505.60Z	B02D000505.60Z	Semi-static type A		11,5 mm	Blanc	BEAL	06/01/2006	06/01/2006		06/01/2006	06/01/2006	06/01/2006
Rope	North Sea 11 mm	B037000505.50G	B037000505.50G	Semi-static type A		11 mm	Blanc	BEAL	06/01/2006	06/01/2006		06/01/2006	06/01/2006	06/01/2006
Rope	Top Work 10,5 mm	B033000505.50H	B033000505.50H	Semi-static type A		10,5 mm	Blanc	BEAL	06/01/2006	06/01/2006		06/01/2006	06/01/2006	06/01/2006
Rope		5646545	5646545	Single					28/03/2006	28/03/2006	J&B&G&P&G&G&G&G&G&G	28/03/2006	28/03/2006	28/03/2006
Rope		788890001	788890001	Single					28/03/2006	28/03/2006	G&H&G&G&G&G&G&G	28/03/2006	28/03/2006	28/03/2006
Rope	antipodes	501b003495505	501b003495505	Single	50	10,5		beal	04/04/2006	04/04/2006	merdupont christian 12 rue ds acacias 45560 la ville	04/04/2006	04/04/2006	04/04/2006
Rope	premium	5025002039605	5025002039605	Single	70	10,3		beal	04/04/2006	04/04/2006	dupont	04/04/2006	04/04/2006	04/10/2008
Rope	cobra	501b001495505	501b001495505	Single	50	8,6	vert	beal	05/04/2005	05/04/2006	enr durant 12 rue des falnes 74561 lesaux les bains	05/04/2006	05/04/2008	05/04/2009
Rope	antipode	501b003495505	501b003495505	Semi-static type A	50	10,5		beal	05/04/2005	05/04/2006	jin	05/04/2006	05/04/2007	05/04/2006
Rope	cobra	501b001495505	501b001495505	Single	200	8,6	vert	beal	06/04/2005	06/04/2006	enr durant gerard	06/04/2006	06/04/2006	06/04/2006
Rope	flyer	453232000	453232000	Single	50	10,2	orange	beal	11/04/2005	11/04/2006	enr ducal alan	11/04/2006	11/04/2006	04/10/2008
Rope	flyer	452858000	452858000	Single				beal	12/04/2006	12/04/2006		12/04/2006	12/04/2006	12/04/2006
Rope	borzal	71b002000505	71b002000505	Semi-static type A	7	13	bleu/blanc	beal	13/04/2005	13/04/2006	renald	13/04/2006	13/04/2006	13/04/2006
Rope	ginkgo	502000505	502000505	Semi-static type A	7	12	jaune/noir	beal	13/04/2005	13/04/2006	renald	13/04/2006	13/04/2006	13/04/2006
Rope	baobab	11b02e000505	11b02e000505	Semi-static type A	7	13,5	rouge et blanc	beal	13/04/2005	13/04/2006	renald	13/04/2006	13/04/2006	13/04/2006
Harness	Aero-Team III	B01185505.70H	B01185505.70H	Type C	Universel	60-100 cm	45-72 cm	BEAL	15/02/2005	04/10/2005		24/10/2005	24/10/2015	04/10/2008
Harness	Aero-Mountain II	B01M185505.D01	B01M185505.D01	Type C	2	75-110 cm	50-70 cm	BEAL	06/01/2006	06/01/2006		06/01/2006	06/01/2006	04/10/2008
Harness	petroclassic	502b01b327505	502b01b327505	Type A				beal	30/03/2006	30/03/2006		30/03/2006	30/03/2006	16/03/2009
Harness	petropark	502b01q194505	502b01q194505	Type C				beal	30/03/2006	30/03/2006		30/03/2006	30/03/2006	16/03/2009
Harness		5071b01q194505	5071b01q194505	Type C				beal	30/03/2006	30/03/2006		30/03/2006	30/03/2011	16/03/2009
Harness	petropark	10b01q194505	10b01q194505	Type A				beal	30/03/2006	30/03/2006		30/03/2006	30/03/2011	16/03/2009
SkiFit	inventata	5c8b002062606	5c8b002062606					beal	30/03/2006	30/03/2006		30/03/2006	30/03/2006	16/03/2009
SkiFit	inventata	5f8b002062606	5f8b002062606					beal	30/03/2006	30/03/2006		30/03/2006	30/03/2006	16/03/2009
SkiFit	inventata	5f8b002062606	5f8b002062606					beal	30/03/2006	30/03/2006		30/03/2006	30/03/2006	16/03/2009
SkiFit	inventata	5f8b002062606	5f8b002062606					beal	30/03/2006	30/03/2006		30/03/2006	30/03/2006	16/03/2009
SkiFit	inventata	5c8b002062606	5c8b002062606					beal	30/03/2006	30/03/2006		30/03/2006	30/03/2006	16/03/2009
SkiFit	inventata	5d8b002062606	5d8b002062606					beal	30/03/2006	30/03/2006		30/03/2006	30/03/2006	16/03/2009
PPE	Model	id. manufacturer	identification	Type				Manufacturer	Date of manufacture	Date of purchase	Owner	Date of first use	Theoretical end of life date	The date of ending guarantee
Descendeur/assur	Clit-Clit	12345	12345					petri	06/01/2004	06/01/2006		06/01/2005	06/01/2006	04/10/2008
chaussants	435454	575454	57545401						21/02/2006	21/02/2006		21/02/2006	21/02/2006	21/02/2006



Periods of use/PPE

Model	Identifier	Type	Exits	Entry	Duration
Aero-Team III	9011185505.70H	Type C	16/01/2006 15:57	01/02/2006 15:06	15 D - 23 H 09 Mn
Aero-Team III	9011185505.70H	Type C	08/02/2006 15:36	16/02/2006 15:46	8 D - 00 H 09 Mn
Aero-Team III	9011185505.70H	Type C	17/02/2006 10:43	21/02/2006 11:14	4 D - 00 H 30 Mn
Aero-Team III	9011185505.70H	Type C	22/02/2006 15:03	23/02/2006 11:28	0 D - 20 H 25 Mn
Aero-Team III	9011185505.70H	Type C	24/02/2006 11:57	10/03/2006 15:35	14 D - 03 H 37 Mn
Aero-Team III	9011185505.70H	Type C	16/03/2006 12:41	24/03/2006 14:43	8 D - 02 H 02 Mn
Aero-Team III	9011185505.70H	Type C	24/03/2006 15:41	28/03/2006 15:06	3 D - 23 H 25 Mn
Aero-Team III	9011185505.70H	Type C	29/03/2006 11:55	04/04/2006 11:53	5 D - 23 H 57 Mn
Aero-Team III	9011185505.70H	Type C	05/04/2006 10:27	11/04/2006 10:23	5 D - 23 H 56 Mn
Aero-Team III	9011185505.70H	Type C	12/04/2006 10:10	31/05/2006 17:15	49 D - 07 H 04 Mn
Aero-Team III	9011185505.70H	Type C	01/06/2006 10:11	02/06/2006 14:51	1 D - 04 H 39 Mn
					117 D - 12 H 58 Mn
Cobra II	9001495505.601	Half	13/01/2006 17:37	15/01/2006 17:59	2 D - 00 H 22 Mn
Cobra II	9001495505.601	Half	16/01/2006 15:57	01/02/2006 15:06	15 D - 23 H 09 Mn
Cobra II	9001495505.601	Half	08/02/2006 15:36	16/02/2006 15:46	8 D - 00 H 09 Mn
Cobra II	9001495505.601	Half	17/02/2006 10:43	21/02/2006 11:14	4 D - 00 H 30 Mn
Cobra II	9001495505.601	Half	22/02/2006 15:03	23/02/2006 11:28	0 D - 20 H 25 Mn
Cobra II	9001495505.601	Half	24/02/2006 11:57	10/03/2006 15:35	14 D - 03 H 37 Mn
Cobra II	9001495505.601	Half	16/03/2006 12:41	24/03/2006 14:43	8 D - 02 H 01 Mn
Cobra II	9001495505.601	Half	24/03/2006 15:41	28/03/2006 15:06	3 D - 23 H 25 Mn
Cobra II	9001495505.601	Half	29/03/2006 11:55	11/04/2006 10:23	12 D - 22 H 27 Mn
Cobra II	9001495505.601	Half	01/06/2006 10:11	04/07/2006 15:02	33 D - 04 H 50 Mn
					103 D - 05 H 00 Mn
Flyer II	9002495505.901 A	Single	16/01/2006 15:57	01/02/2006 15:06	15 D - 23 H 09 Mn
Flyer II	9002495505.901 A	Single	08/02/2006 15:36	16/02/2006 15:46	8 D - 00 H 09 Mn
Flyer II	9002495505.901 A	Single	17/02/2006 10:43	21/02/2006 11:14	4 D - 00 H 30 Mn
Flyer II	9002495505.901 A	Single	22/02/2006 15:03	23/02/2006 11:28	0 D - 20 H 25 Mn
Flyer II	9002495505.901 A	Single	24/02/2006 11:57	10/03/2006 15:35	14 D - 03 H 37 Mn
Flyer II	9002495505.901 A	Single	16/03/2006 12:41	24/03/2006 14:43	8 D - 02 H 01 Mn
Flyer II	9002495505.901 A	Single	24/03/2006 15:41	28/03/2006 15:06	3 D - 23 H 25 Mn
Flyer II	9002495505.901 A	Single	29/03/2006 11:55	31/05/2006 17:15	63 D - 05 H 19 Mn
Flyer II	9002495505.901 A	Single	01/06/2006 10:11	04/07/2006 15:02	33 D - 04 H 50 Mn
					151 D - 11 H 30 Mn
Antipodes 10.5 mm	9003495505.801	Single	16/01/2006 15:57	01/02/2006 15:06	15 D - 23 H 09 Mn
Antipodes 10.5 mm	9003495505.801	Single	08/02/2006 15:36	16/02/2006 15:46	8 D - 00 H 09 Mn
Antipodes 10.5 mm	9003495505.801	Single	17/02/2006 10:43	21/02/2006 11:14	4 D - 00 H 30 Mn
Antipodes 10.5 mm	9003495505.801	Single	22/02/2006 15:03	23/02/2006 11:28	0 D - 20 H 25 Mn
Antipodes 10.5 mm	9003495505.801	Single	24/02/2006 11:57	10/03/2006 15:35	14 D - 03 H 37 Mn
Antipodes 10.5 mm	9003495505.801	Single	16/03/2006 12:41	24/03/2006 14:43	8 D - 02 H 01 Mn
Antipodes 10.5 mm	9003495505.801	Single	24/03/2006 15:41	28/03/2006 15:06	3 D - 23 H 25 Mn
Antipodes 10.5 mm	9003495505.801	Single	11/04/2006 09:15	11/04/2006 10:23	0 D - 01 H 08 Mn
Antipodes 10.5 mm	9003495505.801	Single	01/06/2006 10:11	04/07/2006 15:02	33 D - 04 H 50 Mn
					88 D - 07 H 18 Mn
Industrie 11 mm	902J000505.80J	Semi-static type A	16/01/2006 15:57	01/02/2006 15:05	15 D - 23 H 08 Mn
Industrie 11 mm	902J000505.80J	Semi-static type A	08/02/2006 15:36	13/02/2006 14:08	4 D - 22 H 31 Mn
Industrie 11 mm	902J000505.80J	Semi-static type A	13/02/2006 14:08	13/02/2006 14:09	0 D - 00 H 00 Mn
Industrie 11 mm	902J000505.80J	Semi-static type A	17/02/2006 10:43	21/02/2006 11:14	4 D - 00 H 30 Mn
Industrie 11 mm	902J000505.80J	Semi-static type A	22/02/2006 15:03	23/02/2006 11:28	0 D - 20 H 25 Mn
Industrie 11 mm	902J000505.80J	Semi-static type A	24/02/2006 11:57	10/03/2006 15:35	14 D - 03 H 37 Mn
Industrie 11 mm	902J000505.80J	Semi-static type A	16/03/2006 12:41	23/03/2006 14:22	7 D - 01 H 41 Mn
Industrie 11 mm	902J000505.80J	Semi-static type A	24/03/2006 14:42	24/03/2006 14:43	0 D - 00 H 00 Mn




Forthcoming controls and maintenance

Event type	Date	PPE	Type	Unique id. number
Control	24/10/2006	Harness	Type C	9011185505.70H
Maintenance	04/01/2007	Harness	Type C	9011185505.70H
Control	06/01/2007	Rope	Half	9001495505.60 I
Maintenance	06/01/2007	Rope	Half	9001495505.60 I
Control	07/02/2005	Rope	Single	9002495505.901 A
Maintenance	07/02/2005	Rope	Single	9002495505.901 A
Control	13/01/2007	Rope	Single	9003495505.601
Maintenance	06/01/2007	Rope	Single	9003495505.601
Control	04/07/2007	Rope	Semi-static type A	9021000505.80J
Maintenance	06/01/2007	Rope	Semi-static type A	9021000505.80J
Control	06/01/2007	Rope	Semi-static type B	9025000505.506
Maintenance	06/01/2007	Rope	Semi-static type B	9025000505.506
Control	06/01/2007	Rope	Semi-static type A	9022000505.51D
Maintenance	06/01/2007	Rope	Semi-static type A	9022000505.51D
Control	06/01/2007	Rope	Single	9028000505.808
Maintenance	06/01/2007	Rope	Single	9028000505.808
Control	06/01/2007	Rope	Semi-static type A	9029000505.60F
Maintenance	06/01/2007	Rope	Semi-static type A	9029000505.60F
Control	06/01/2007	Rope	Semi-static type A	9020000505.60Z
Maintenance	06/01/2007	Rope	Semi-static type A	9020000505.60Z
Control	06/01/2007	Rope	Semi-static type A	9037000505.50G
Maintenance	06/01/2007	Rope	Semi-static type A	9037000505.50G
Control	06/01/2007	Rope	Semi-static type A	9033000505.50E
Maintenance	06/01/2007	Rope	Semi-static type A	9033000505.50E
Control	06/01/2007	Harness	Type C	901M185505.D01
Maintenance	06/01/2007	Harness	Type C	901M185505.D01
Control	06/01/2006	Descendeur/assureur		12345
Maintenance	06/01/2006	Descendeur/assureur		12345
Control	21/02/2007	chaussons435454		57545401
Maintenance	21/02/2007	chaussons435454		57545401
Control	28/03/2007	Rope	Single	5646545
Maintenance	28/03/2007	Rope	Single	5646545
Control	28/03/2007	Rope	Single	yrlj hgagai
Maintenance	28/03/2007	Rope	Single	yrlj hgagai
Control	30/03/2007	Skirt		5f6002062906
Maintenance	30/03/2007	Skirt		5f6002062906
Control	30/03/2007	Skirt		5f6002062906
Maintenance	30/03/2007	Skirt		5f6002062906
Control	30/03/2007	Skirt		5f6002062906

✓ **Configure the tools**



 You have to register then close the application so that the recording of the parameters are enabled.

1/ **File language used** : By clicking the button 'file' you choose the language of your choice.

2/ **Save the database into the BEAL Software** : The list of your PPE is registered in a database. If you wish to save it, press on the button " **Save the database into the BEAL Software**" and register the file in the chosen place.

2/ **Import database into the BEAL Software** : You can import a data base of PPE in BEAL software. For that purpose, press on the button " **Import database into the BEAL Software** " and specify the place of the data base to be imported.

3/ **Import the BEAL videos** : Videos of learning in the control and in the maintenance were created by BEAL. They can be associated to the sheet of control of BEAL Software. For that purpose, download free of charge on www.beal-services.info: "BEAL software - Videos FR.exe ". Then, launch the installation. Once ended, you can show them in the tab "Control".

You can also install videos by pressing on the button " **Import videos BEAL** " and by specifying the place of the file: ' BealSoftware_Videos.dat ' whom you downloaded beforehand with videos.

4/ **Import a BEAL Software language file**: You can import the language file of your choice by pressing on the button " **Import a BEAL Software language file** " and specifying the place of your file to be imported.

5/ **Start the management « flash » for entries and exits** : En cochant la case prévue à cet effet, vous activez la gestion flash des entrées et des sorties. L'enregistrement des entrées et sorties d'EPI se fait automatiquement en passant simplement l'EPI concerné devant le lecteur.

By marking the compartment designed for this, you activate the management "flash" of entries and exits. The recording of PPE's inputs and outputs is simply made automatically in putting the concerned PPE on the reader.