


RECOMMENDATIONS

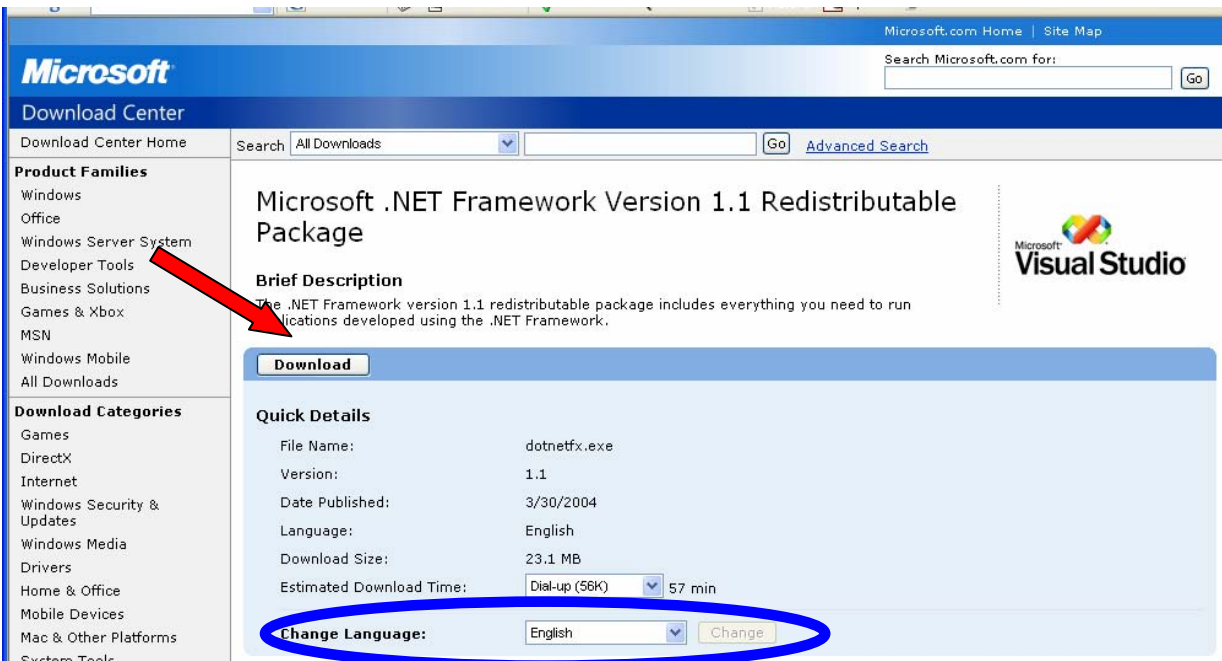
 First, your computer has to be a PC and the BEAL software will only run on a PC with Windows 98/Me/2000/NT or XP. Windows XP is recommended. Moreover you must have Microsoft Framework software installed. Framework is already installed on new PC's. But if in doubt, download the latest version from Microsoft before installing the BEAL software.

Microsoft Framework software installation :

 Double click on the following link:

<http://www.microsoft.com/downloads/details.aspx?familyid=262D25E3-F589-4842-8157-034D1E7CF3A3&displaylang=en>

When you are on the Microsoft download center, double click on "download" and follow the Microsoft instructions.




The screenshot shows the Microsoft Download Center interface. The main heading is "Microsoft .NET Framework Version 1.1 Redistributable Package". Below the heading is a "Download" button. A "Brief Description" section follows, stating that the package includes everything needed to run applications developed using the .NET Framework. The "Quick Details" section lists the following information:

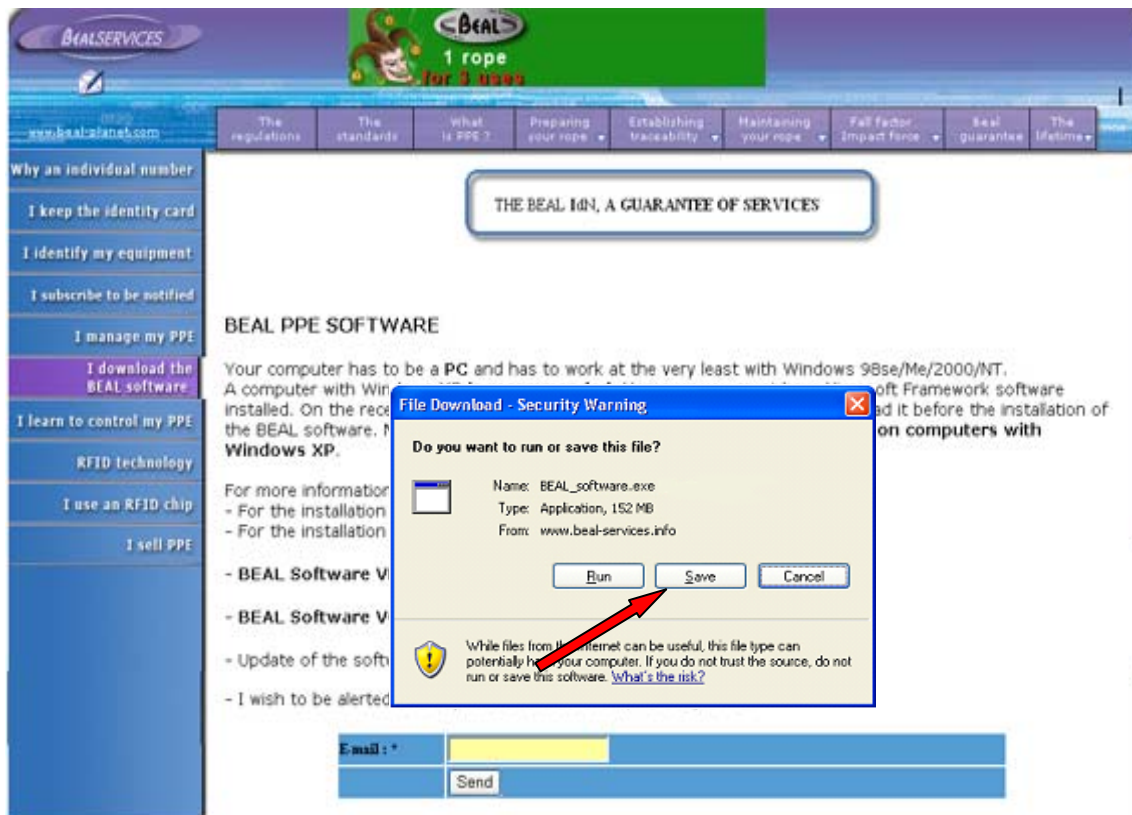
File Name:	dotnetfx.exe
Version:	1.1
Date Published:	3/30/2004
Language:	English
Download Size:	23.1 MB
Estimated Download Time:	Dial-up (56K) 57 min

At the bottom of the "Quick Details" section, there is a "Change Language:" dropdown menu currently set to "English", with a "Change" button next to it. A blue circle highlights this area. A red arrow points to the "Download" button.

NB: If you want you can choose another language for your setup

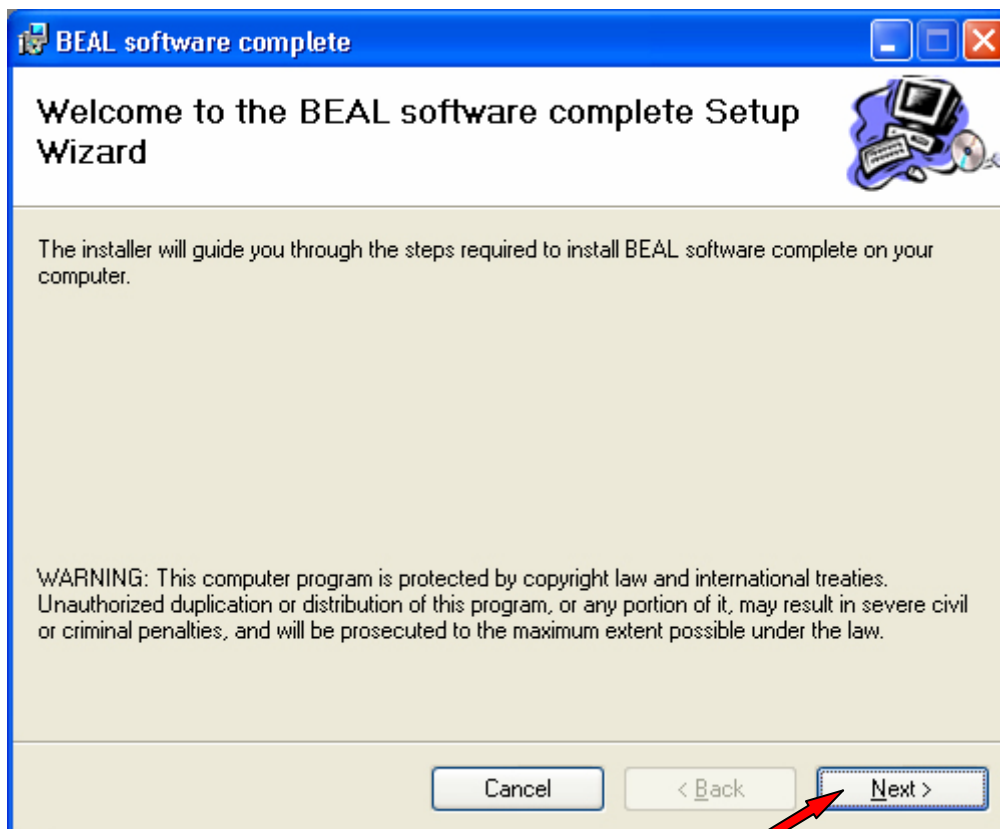
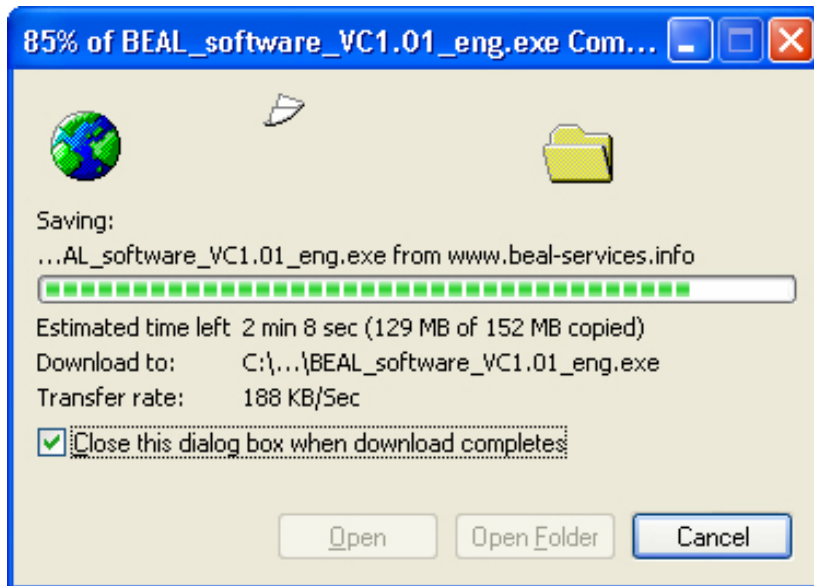
BEAL software installation :

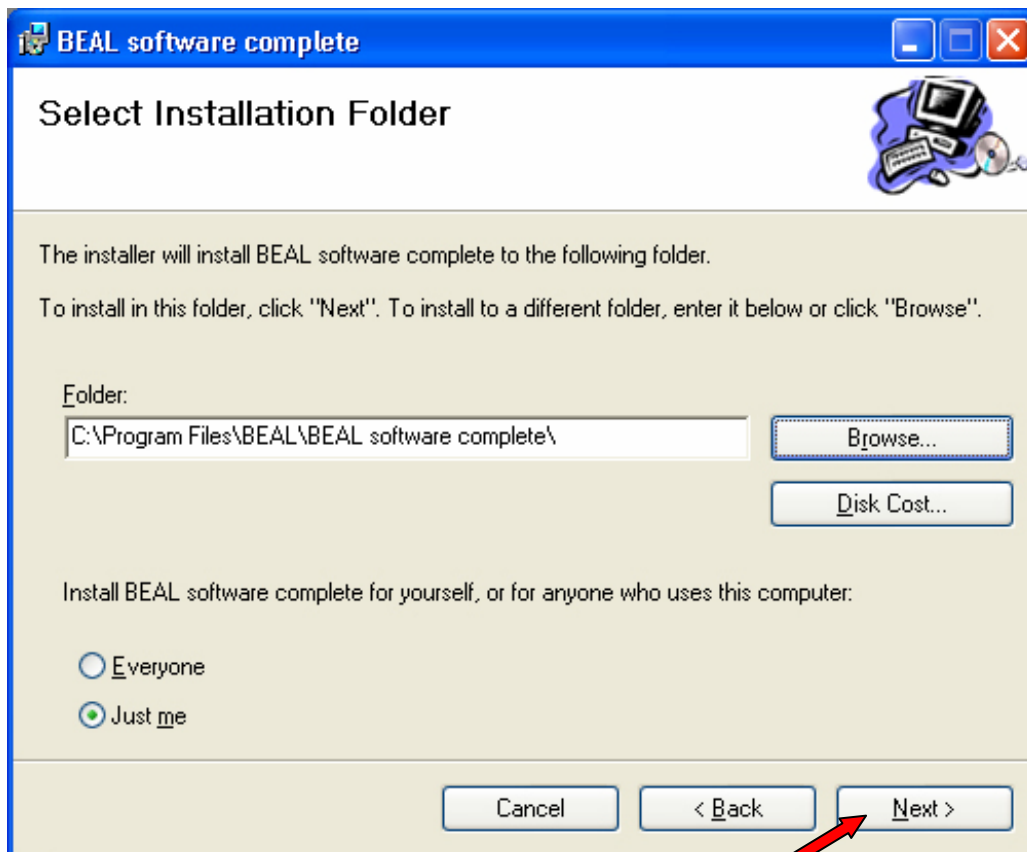
 After the Beal software setup file has downloaded (complete or light version), double click on it to launch the software setup on your computer and follow the instructions on your screen.



The screenshot shows the BEAL website interface. At the top, there is a navigation menu with items like 'The regulations', 'The standards', 'What is PPE?', 'Preparing your rope', 'Establishing traceability', 'Maintaining your rope', 'Fall factor', 'Impact force', 'Beal guarantee', and 'The lifetime'. Below the navigation, there is a sidebar with various service options such as 'Why an individual number', 'I keep the identity card', 'I identify my equipment', 'I subscribe to be notified', 'I manage my PPE', 'I download the BEAL software', 'I learn to control my PPE', 'RFID technology', 'I use an RFID chip', and 'I sell PPE'. The main content area features a banner for 'THE BEAL IDN, A GUARANTEE OF SERVICES' and a section for 'BEAL PPE SOFTWARE'. A 'File Download - Security Warning' dialog box is overlaid on the page, asking 'Do you want to run or save this file?'. The dialog box provides details: Name: BEAL_software.exe, Type: Application, 152 MB, From: www.beal-services.info. It includes 'Run', 'Save', and 'Cancel' buttons. A red arrow points to the 'Save' button. Below the dialog box, there is an email subscription form with an 'Email: *' field and a 'Send' button.

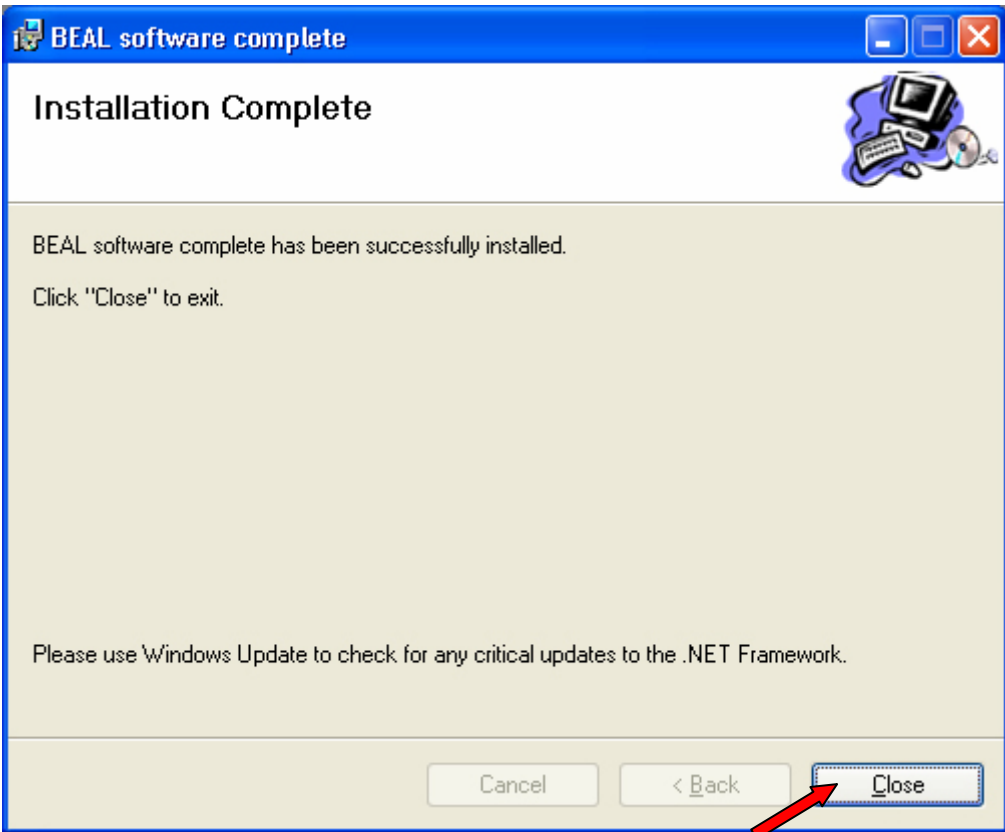
NB: Save the file on your PC in the place of your choice.





Select the location of the folder "ReaderDrivers" in your software installation folder (by default C:\Program Files\BEAL\BEAL software V2\Usb_ReaderDrivers)



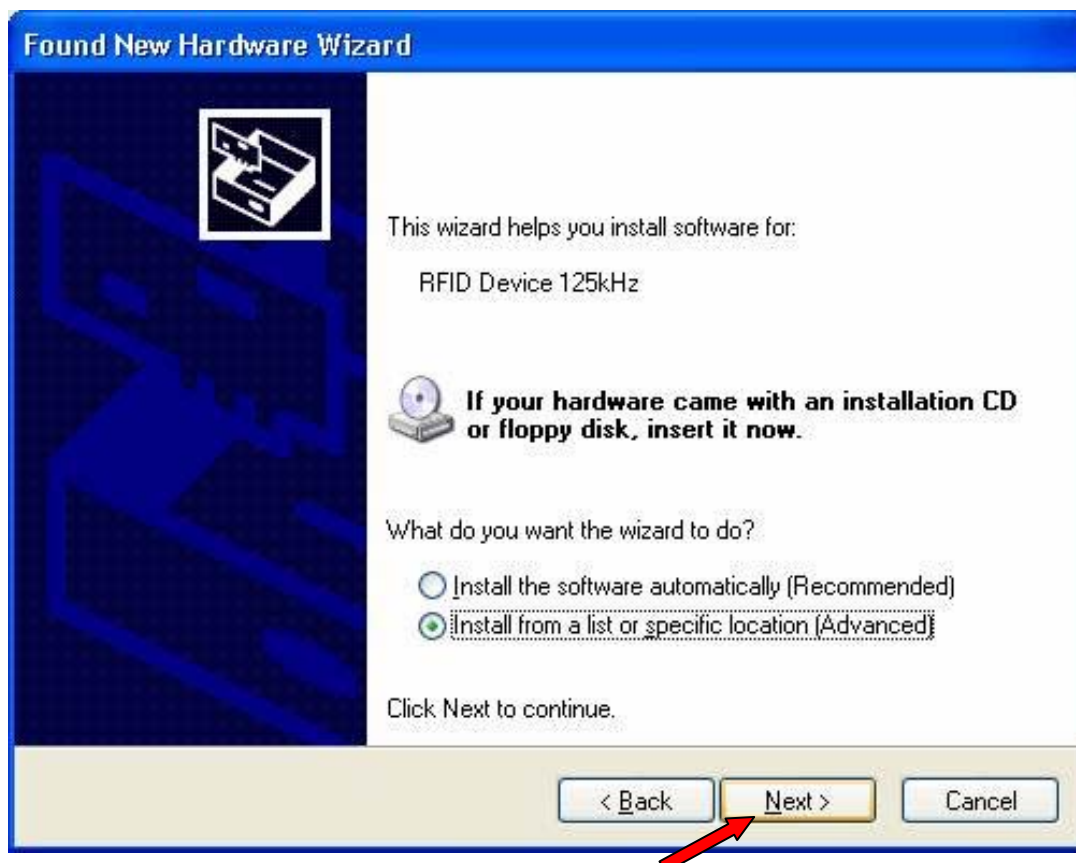


Chip reader installation on a USB port:


 The first time you plug the chip reader into a USB port of your computer, a "RFID device 125KHz" is detected.



 Windows will ask to search for the drivers. Click 'No, not this time'. Then you have to locate the specific drivers.




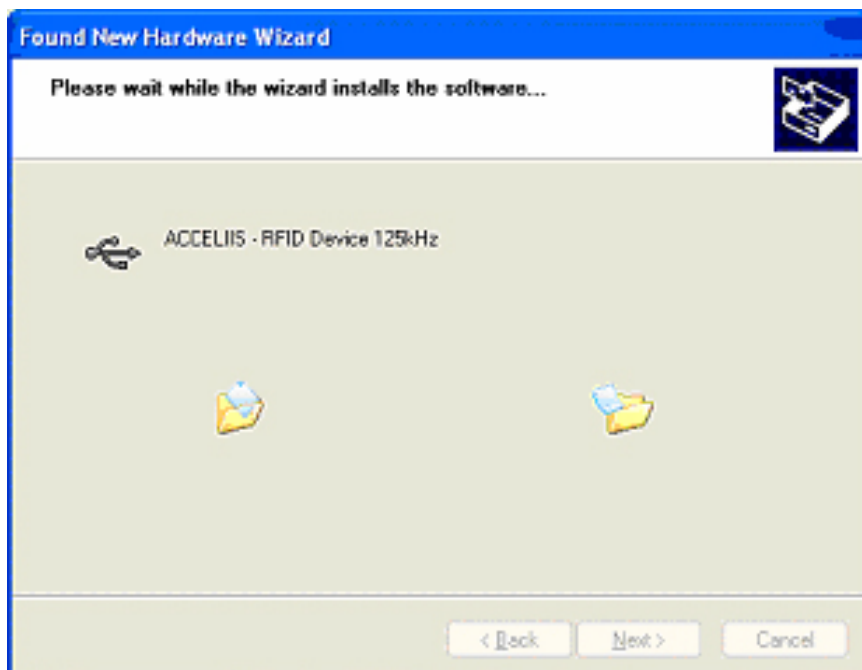


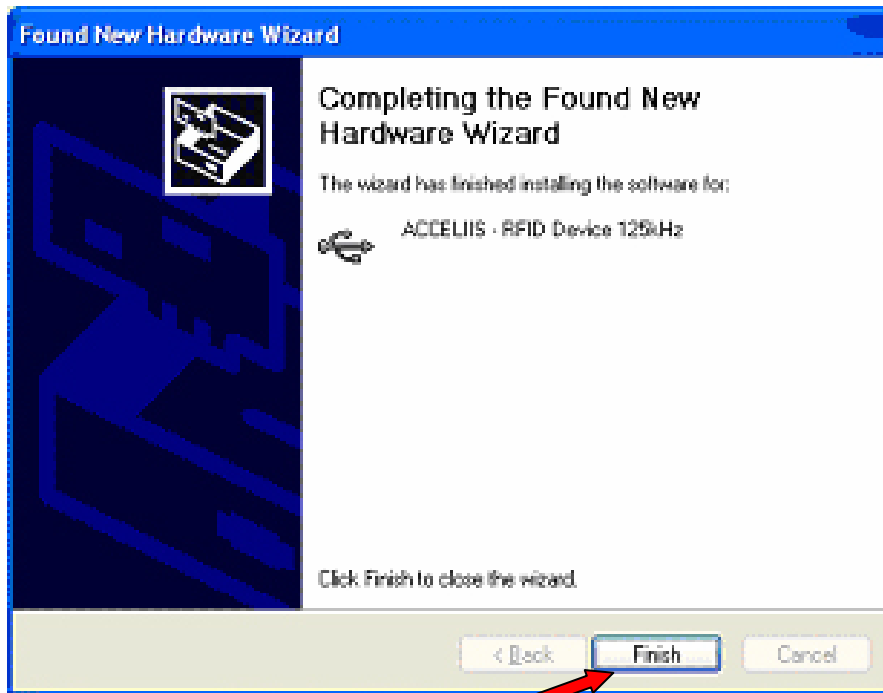
 Select the location of the folder "ReaderDrivers" in your software installation folder (by default C:\Program Files\BEAL\BEAL software light\Usb_ReaderDrivers or C:\Program Files\BEAL\BEAL software complete\Usb_ReaderDrivers)




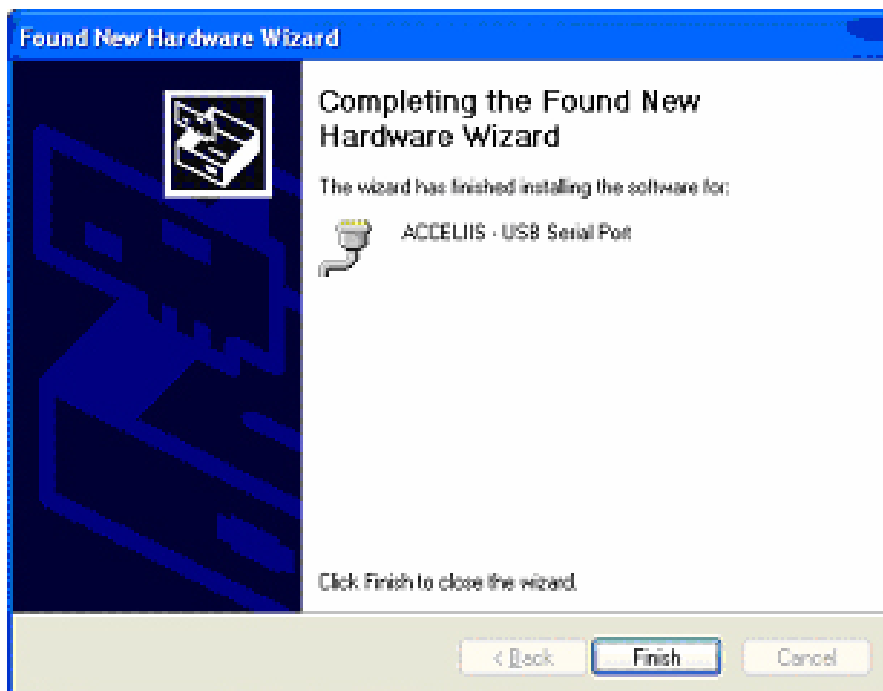



 The device is then installed as "ACCELIIS - Soap Box Reader - RFID 125 KHz". Windows will ask you if you wish to continue with the installation as it has not been validated by Microsoft. Click 'run'.

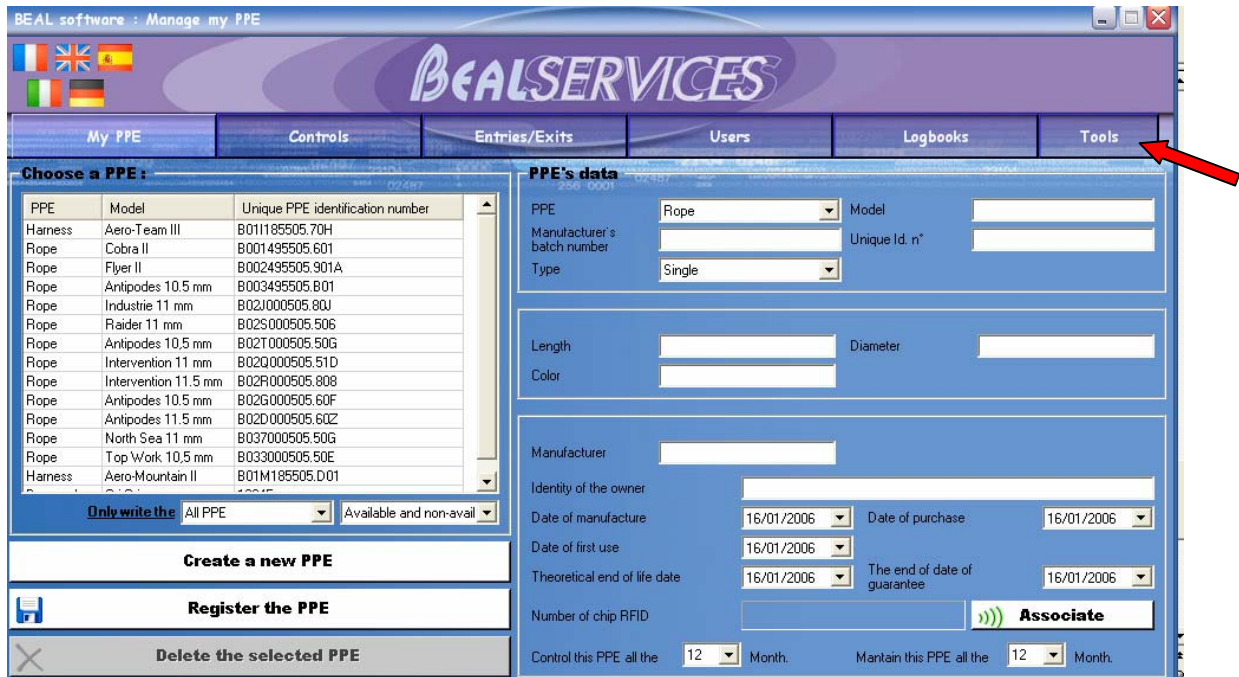





 After the installation of the first driver, the second 'Add New Hardware Wizard' will be displayed. Repeat the installation process until obtain:





 The BEAL PPE software will work without reporting an error.




 To configure the use of the chip reader on your BEAL Software, click on the icon "tools" of the menu.

 **NB:** With several USB ports, it is possible that your computer requires the same RFID reader installation for all the USB ports. To avoid this, it is recommended that the RFID reader is always used on the same USB port.

 **NB:** After starting your PC, if your RFID reader is not detected, you have to disconnect and reconnect it. To avoid this problem, it is recommended that the RFID reader is connected after Windows has started.

 **NB:** If your USB port chip reader is correctly installed and there are detection problems, turn the RFID chip reader over (IdN side hidden) and try again.

 **NB:** If you use a laptop, it is strongly recommended to connect your computer to the mains supply.

 **NB:** If, your USB port chip reader doesn't work in spite of all these previous attempts, it is possible that your PC doesn't supply power to the USB port. You will have to use a powered USB hub.